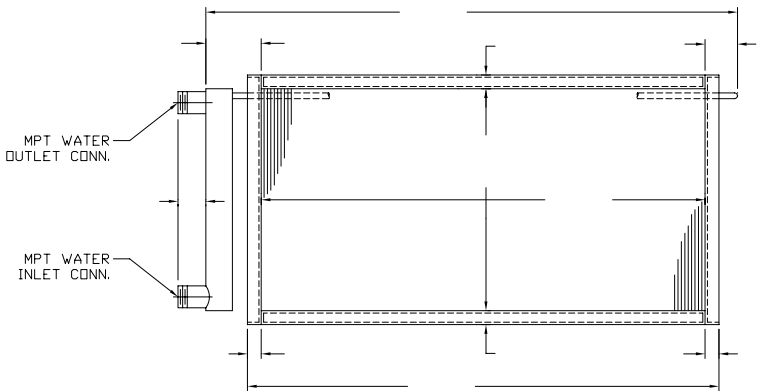
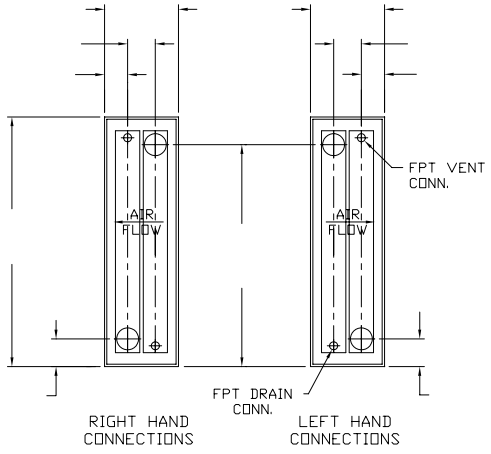
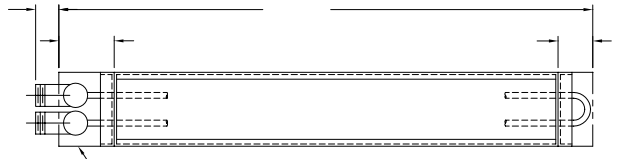


TUBING  
(MAT'L./SIZE) = \_\_\_\_\_  
 FINS  
(MAT'L.) = \_\_\_\_\_  
 FINS PER INCH = \_\_\_\_\_  
 ROWS DEEP = \_\_\_\_\_  
 (IN DIRECTION OF AIR FLOW)  
 GLYCOL = \_\_\_\_\_  
 ( GLYCOL TYPE AND PERCENTAGE )  
 WATER/GLYCOL CIRCUITS = \_\_\_\_\_

S.C.F.M. = \_\_\_\_\_  
 ENT.AIR TEMP. = \_\_\_\_\_ °F  
 LVG.AIR TEMP. = \_\_\_\_\_ °F  
 G.P.M. = \_\_\_\_\_  
 ENT.SOLUTION TEMP. = \_\_\_\_\_ °F  
 LVG.SOLUTION TEMP. = \_\_\_\_\_ °F  
 AIR FRICTION = \_\_\_\_\_  
 (IN INCHES OF WATER)  
 W.P.D. = \_\_\_\_\_ (FT/HD)



			CUSTOMER ORDER NO.	ANDERSON SNOW SHOP ORDER NO.	DRAWN BY	TYPE "W" HOT GLYCOL COIL FOR	
DATE SYM. REVISION RECORD DR. CK.			JOB NAME			ANDERSON-SNOW CORPORATION -SCHILLER PARK, ILLINOIS 60176-	DRAWING NO. CAT.014
TEST PRESSURES						ALL DIMENSIONS ARE ± 1/8"	
PRELIMINARY AIR TEST			PSIG AIR UNDER WATER				
FINAL FAB AIR TEST			PSIG AIR UNDER WATER				
FINAL TEST PRESSURES			PSIG				
MAXIMUM OPERATING PRESSURE			PSIG °F				